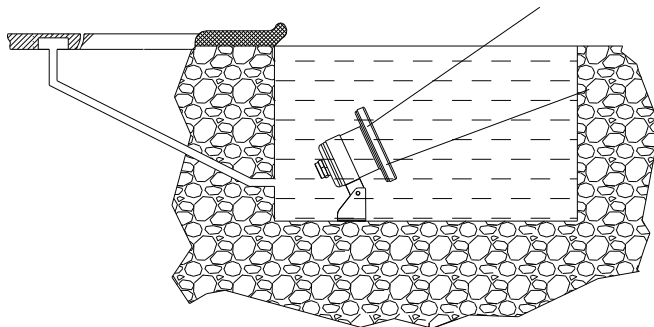
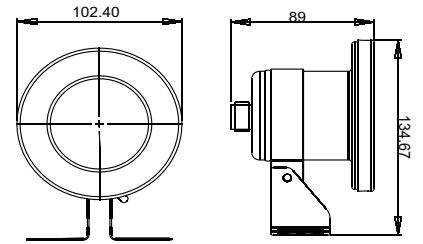


Stainless Steel Underwater Light for Fountain: F20 Series

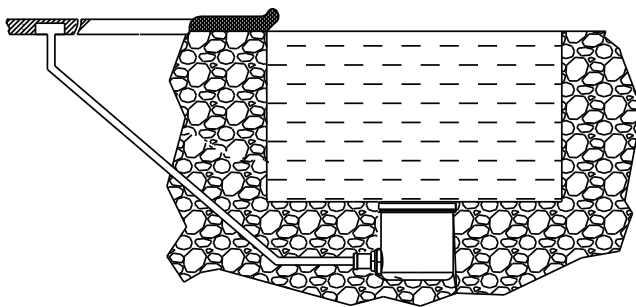
Features

- Material: AISI 304 / AISI 316 Stainless Steel
- Cable: 2.5m
- Waterproof: IP68
- Installation: Floor Mounted (Housing type)

	Code	Model No	Description	Watt/Voltage	Lumination (LUX)	Remarks
1	88044407	UL-F20A	MR16 Halogen Lamp Fountain Light with base	20W / 12V	90000	White Light
2	88044307	LED-F20A	MR16 (18 Bulbs) LED Fountain Light with base	1W / 12V	5000	White Light
3	88042807	UL-F20	MR16 Halogen Lamp Fountain Light with housing	20W / 12V	90000	White Light
4	88044207	LED-F20	MR16 (18 Bulbs) LED Fountain Light with housing	1W / 12V	5000	White Light
	04011016	N/A	MR16 Two-pin 18LEDs Bulb	1W / 12V	N/A	Auto Colour Change
5	04011015	N/A	MR16 Two-pin 18LEDs Bulb	1W / 12V		White Colour
	04011034	N/A	MR16 Two-pin 18LEDs Bulb	1W / 12V		Blue Colour
6	04011001	N/A	MR16 Halogen Lamp	20W / 12V	N/A	Colour lens (Red/Green/Blue)



Installation Diagram for F20A Series



Installation Diagram for F20 Series

